

axicon

FOR BARCODE QUALITY

AXICON

LINEAR BARCODE VERIFIERS

Models: 6025-S, 6525-S, 7025-S

DOCUMENTATION BOOKLET



www.axicon.com

This page is intentionally blank.

CONTENTS

	Page
AXICON VERIFIER CERTIFICATION	5
START UP GUIDE	
◆ Introduction	6
◆ Important Information	7
◆ What's in the transit case	7
◆ Software Installation for Windows (all versions)	8
◆ Hardware installation for Windows	9
◆ Holding the Verifier	13
◆ User Calibration	14
◆ The "Continuous scan" mode	16
◆ Getting started with the Axicon verifier	17
◆ Configuring the Axicon Verifier	21
AXICON SOFTWARE LICENCE AGREEMENT	26
AXICON WARRANTY AND SERVICE CONTRACT	24
◆ Warranty on all Products	29
◆ Service Contract	30
VERIFIER SERVICING & FACTORY RECALIBRATION (VCAS)	
◆ Why CCD based verifiers require factory recalibration	31
◆ Axicon Factory Recalibration Service (VCAS)	33
◆ Other faults or damage	34
◆ Equipment Rental Scheme	34
CONTACT US	35
VCAS RECORD	36

This page is intentionally blank

Conformance Certification

We *Axicon Auto ID Ltd*
of *Church Road, Weston on the Green, Oxfordshire, OX25 3QP, UK*

Declare under our sole responsibility that the product has been designed and manufactured at our address in the U.K. to perform verification of barcode quality in accordance with the following standards:

ANSI X3. 182	ISO/IEC 15416	ISO/IEC 15420	ISO/IEC 16388
ISO/IEC 16390	ISO/IEC 15417	ISO/IEC 24724	

We further declare that the verifier has been designed and manufactured to ensure conformance to Primary Reference Test Symbols available from N.I.S.T. and Traceable Reflectance Standards available from N.P.L. in accordance with ISO/IEC 15426-1.

Tolerances: Decodability: $\pm 8\%$
 Rmin: $\pm 3\%$
 Rmax: $\pm 5\%$
 Defect: $\pm 8\%$
 Modulation: $\pm 12\%$

We also certify that this equipment conforms to the following standards:-

Barcoding: ISO/IEC 15426-1 VERIFIER CONFORMANCE STANDARD

European Safety EN 60950

Electromagnetic Compatibility EN 55022 & EN 55024

We also certify that the standards EN 60825 is not applicable to the product.

This equipment meets the requirements of the directives 2004/108/EC (Electromagnetic Compatibility), 2006/95/EC (Low Voltage), based on our own relevant test reports.

Axicon Auto ID Ltd also certifies that this equipment, when used in conjunction with the latest verifier software has all of the features required to meet the 21CFR Part 11 standard.

We also certify that this verifier uses solid-state technology (no moving parts) and LEDs for the illumination of the barcode. It does not use a laser and consequently there are none of the usual health and safety risks associated with the use of lasers.

INTRODUCTION

Thank you for purchasing an Axicon Verifier. This short guide will enable you to get started with your Axicon Verifier quickly and easily.

There is also an on-screen help facility available to users embedded within the software.

Axicon has developed a number of "Feature Sheets" to describe how to implement particular features of the Axicon Verification system and these are available to download from our website www.axicon.com

The Axicon Verifier is designed to work with any PC running a version of Microsoft Windows currently supported by Microsoft (also some earlier versions may also be supported but cannot be guaranteed - see notes).

IMPORTANT INFORMATION

1. Your Axicon verifier is a piece of high precision quality control equipment and should be handled with due care.
2. Please retain the plastic transit case. It will protect the equipment in transit.
3. Only use power and data cables supplied by Axicon. Use of non-approved accessories will invalidate the warranty.
4. If the verifier is dropped (or subjected to similar misuse) the accuracy of the results may be affected. The unit should be returned to Axicon immediately for servicing.
5. Axicon recommends that the verifier is factory recalibrated annually. The unit should be returned to Axicon or to your approved Axicon reseller for this check to be performed.
6. As the owner of an Axicon Verifier you are entitled to free software updates for life. The latest copy of the software is always posted on our website (www.axicon.com)
7. Subject to the terms of the license you are permitted to make additional copies of the Axicon Verifier software.

WHAT'S IN THE TRANSIT CASE?

Please ensure that the following items are present upon receipt.

One of the following verifiers and the relevant cables:

- Axicon 6000 Series - CCD verifier with USB cable attached.
- Axicon 6500 Series - CCD verifier with USB cable attached.
- Axicon 7000 Series - CCD verifier with USB cable attached.

- Software CD.

- Wallet containing Documentation Booklet (includes Start Up Guide) and Calibration Sheet

SOFTWARE INSTALLATION -

- WINDOWS (ALL CURRENT VERSIONS)

1. Insert the CD into the CD drive
2. The Install Program should now start automatically. (If not, open the CD using Windows Explorer and double-click the Autorun Program.)
3. Click "Install Axicon Verifier"
4. Follow the on-screen installation instructions for the next four windows (Select a language, Welcome, Software License Agreement and choose destination location) until you get to the "Select Components to install" window.
5. At the "Select Components to Install" screen ensure that the boxes relating to "Drivers" and "Main Program" are both ticked. (If it is intended that this verifier should be used as part of an Online verification system then the "Online Verifier" software should also be installed at this stage by ticking the appropriate box, otherwise it should be left unticked).
6. If you have purchased password-protected features you should click the check box next to the relevant item and then click "Next".
7. Click "Next" again to pass the "Select folder in start menu" window
8. If you have selected any password-protected features you will be prompted to enter your serial number and passwords now. The description appears in bold for the features you have chosen to install and the passwords are at the front of this booklet.
If you have more than one verifier with password protected features you should enter the serial number and passwords for the first unit, then click "Enter Another" to enter the serial number and passwords for the additional verifiers.
Click on "Next"
9. The software will now be installed.
10. Leave the software CD in the PC in order to install the USB drivers.

HARDWARE INSTALLATION FOR WINDOWS

LOADING USB DRIVERS

1. Plug the verifier into any available USB2 or USB3 port directly on the computer. (Please note that the Axicon "S" range verifiers will *not* work with a USB1 port).
2. For Windows 7 and Windows 8 installations the drivers should be installed automatically.

After installation is completed you will find the "Axicon Verifier" directory in "Start Menu/Programs" and a shortcut to the program on your desktop.

- Double clicking the Axicon Verifier shortcut icon will now start the software.
- Two windows will open: the Command window and the Summary window.
- The LED array of your CCD should now be lit and the text in the bottom right hand corner of the Command window should read "Ready to scan". If not, refer to the troubleshooting section of the manual on the CD.

INSTALLATION FOR EARLIER VERSIONS OF WINDOWS AND WHEN MANUAL INSTALLATION OF DRIVERS IS REQUIRED.

LOADING USB DRIVERS.

Note: When using much older (and Microsoft-Unsupported) versions of Windows you may need to install the older version of the USB drivers. These are available from Axicon on request.

Manual installation/Updating of the USB drivers (if required)

This section provides some guidance to users of the Axicon Verifiers who need to update the USB drivers.

Firstly install the Axicon Verifier software (version 2.0.25.1 or later - note that it is always possible to download the latest software from our website).

As part of the software installation, the USB driver files will have been copied to the folder that was chosen for the installation.

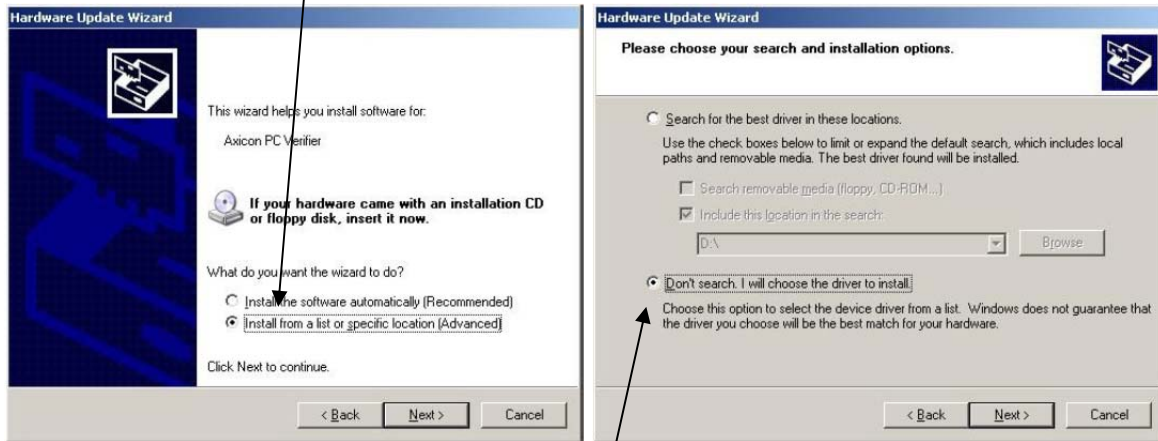
Connect the verifier and wait for the Hardware Wizard to start, or initiate the Hardware Wizard from the Device Manager.

The following screen will appear for computers running Windows XP.

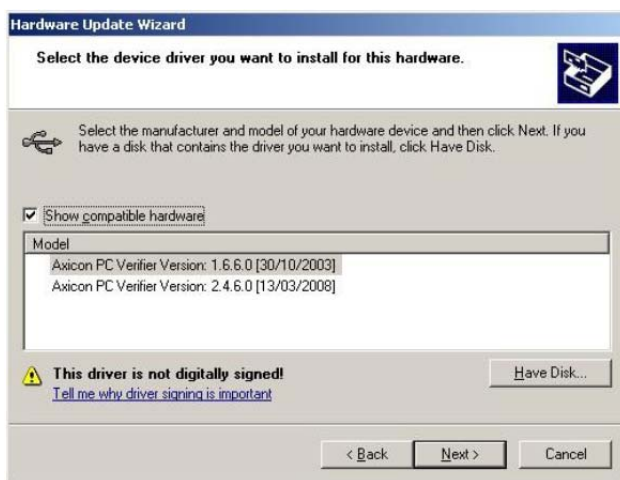


Select the option 'No' on this screen and then click the Next button.

Now choose the "Advanced" option to install from a list or specific location and then click the "Next" button.



On this screen choose the 'Don't Search' option and again click on Next.



If any previous versions of the drivers have been installed, then you may see them listed as shown above, however, at this point click on the Have Disk button which will open the following dialogue.



If the default installation location was chosen when the Axicon Verifier software was installed, then the appropriate driver files will have been copied to the location shown in the dialogue above.

Browse to this location, or to the equivalent location if the default was not chosen and then OK this dialogue.



The Hardware Wizard screen should now look like the one above and the next step is to click the “Next” button to begin the driver installation. A dialogue will pop up asking the user to confirm whether to continue the installation or not.



Click on the 'Continue Anyway' button.

At this point, the driver files will be copied to the appropriate locations and as soon as the installation finishes the verifier hardware will be heard to beep as it powers up and becomes ready to use.

The Axicon Verifier software can now be launched and the software will find and connect to the verifier hardware.

HOLDING THE VERIFIER

The Axicon verifiers are all designed to be used with the verifier positioned flat over the barcode and touching the barcode, as shown in the pictures below...

(This will ensure the most accurate results)



The Axicon 6025-S - Note that all four corners of the verifier are touching the label - it is neither being "rocked" forwards or backwards.

When using the 6525-S the verifier can be operated either horizontally or vertically (on the side of a carton) but always in contact with the barcode.



The Axicon 7025-S being used - again the verifier is in contact with the barcode.

With all "S" range verifiers the verifier should be positioned slightly above or slightly below the barcode, the trigger pressed and the the verifier scrolled down the height of the barcode (as described in the "Continuous scan section of the manual below)

USER CALIBRATION

Calibration with known reflectance values is essential to ensure the accuracy of this equipment. It should be carried out after installation and at regular intervals. (see below)

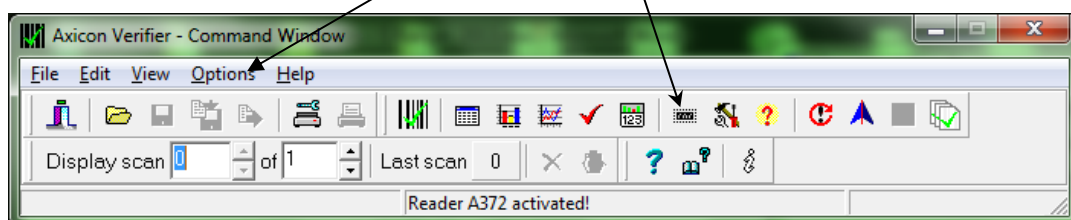
When the software detects an uncalibrated reader the following dialogue box will appear "Reader XXXX has not been calibrated". You must click OK to continue.

- ◆ Please switch on your verifier at least five minutes before you start to calibrate.
- ◆ To calibrate you will need your calibration sheet, which you will find in the wallet.
- ◆ Take the calibration sheet out of the wallet and place it on a flat surface.
- ◆ Check that it has not been damaged in any way

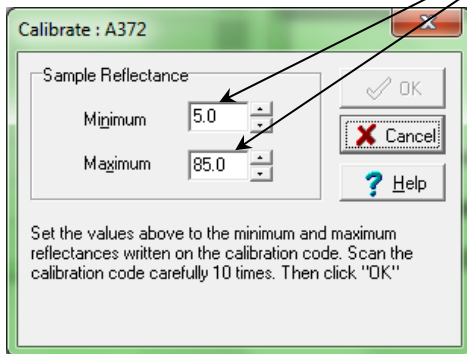
For the Axicon 6000 Series use the EAN13 calibration code at the top left of the sheet.

For the Axicon 6500 and 7000 Series use either of the large calibration codes at the bottom of the sheet.

- ◆ Select the calibrate option.
This is located in the "Options" menu....
(or you can use the icon)



- ◆ You will see a window with two edit boxes for minimum and maximum reflectance values.
- ◆ Ensure that the values shown in the window match the values printed at the bottom of the calibration sheet.
- ◆ (Modify the figures on the screen if necessary to ensure that they are the same as the card



- ◆
- ◆ With the Calibration window open scan the calibration barcode 10 times. Then click the OK button.
- ◆ The verifier is now calibrated and ready to use.

After calibration is completed, store the calibration sheet in its wallet, away from light and physical damage. If your calibration sheet should ever become damaged or discoloured in any way, please contact Axicon or your supplier for a replacement.

NB: During the calibration process the software displays the uncalibrated data and therefore reflectance values and grades displayed *behind* the calibration window can be ignored.

Under normal operating conditions Axicon recommends calibrating the verifier monthly (the verifier software is set up to remind you when it is time to calibrate). In variable light and temperature conditions we recommend more frequent calibration. The frequency can be changed if required by using the "Options / Set-up / Calibration" path.

“CONTINUOUS SCAN” OPERATION

The Axicon “S” Range verifiers have a unique feature called the “Continuous Scan” mode.

When first installed this feature is automatically activated on start-up (but can be de-activated if required) and allows the user to get a far more accurate assessment of the barcode quality in a fraction of the time that it would take with other linear verifiers.

The verifier should be placed either just above or just below the barcode and the trigger pressed. With the trigger still pressed, move the verifier down the height of the barcode.

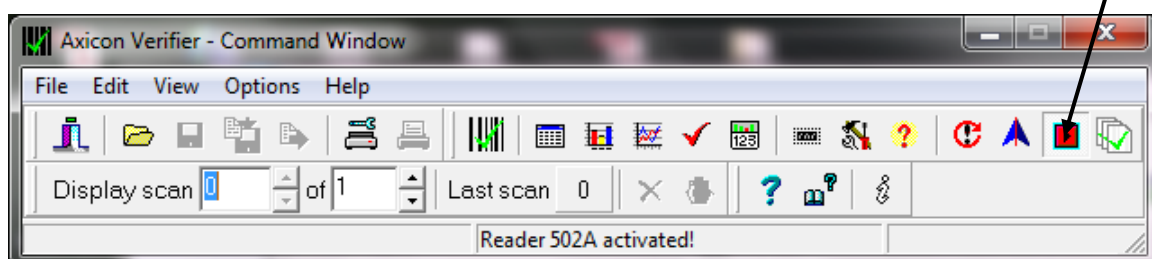
The verifier will perform full ISO/ANSI verification at the rate of 100 verifications a second until it reaches the bottom of the barcode (or gets to the maximum number of scans).

The verifier will automatically perform an average of all of the scans taken to come up with an overall quality grade based upon an assessment of the quality across the entire bar height.

The ideal process (if you have time to practice) is to get a speed at which you can scroll down the barcode and achieve a total of 90+ scans but not get up to 100. - (The more scans the better in general but if you get to 100 then you are not clear as to whether you actually measured the whole bar height since the maximum scan total could have been met before getting to the bottom of the code).

When verifying barcodes on awkward shaped packaging you may find it easier to switch off the “Continuous scan” mode.

This feature can be activated or de-activated as required with a toggle switch on the “Command Window”



GETTING STARTED WITH YOUR AXICON VERIFIER

In countries where Axicon offer training courses we would strongly recommend the use of these as the best way to get the most out of your verifier and to understand all of it's features.

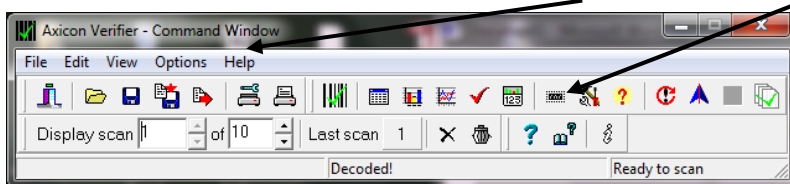
For others, the following provides a general overview and start-point in the verification process:- (This is not intended to be a comprehensive instruction but will guide the user in the most frequently used features.)

When you first start the software you will see...

The "Command" Window :

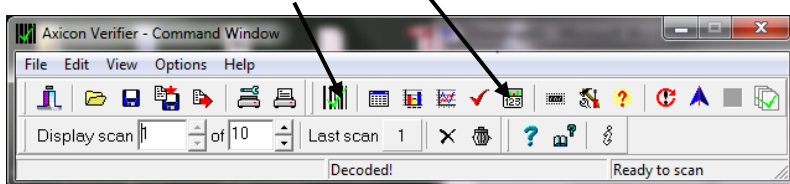
This gives access to all of the main features of the verifier:-

Access can be by using pull down menus or by using icons



Icons are grouped according to function.

As you start using the verifier the main ones that you will use are the display screens grouped at the centre of the top line of the command window - From here to here:-



These cover the Command Screen (that we have seen already)...

A "Summary Screen" that gives the general quality of the barcode

A screenshot of the 'Summary' screen in the Axicon Verifier software. It displays the barcode number 5012345678900 and various scan parameters. The results are presented in a table format with green bars indicating pass/fail status.

	Average	This Scan
Grade (Pass=1.5)	A (4.0) ■	A (4) ■
Average Bar Gain (tolerance)	5% (±30.5%) ■	5% (±30.5%) ■
Magnification	101% (332 µm) ■	101% (332 µm) ■
Check Character	OK (0) ■	
Structure	1 ■	OK ■
Left Margin	1 ■	OK: >=13 (>=11) ■
Right Margin	1 ■	OK: >= 9 (>= 7) ■
Aperture	150 µm (06) ■	59 bars + spaces ■

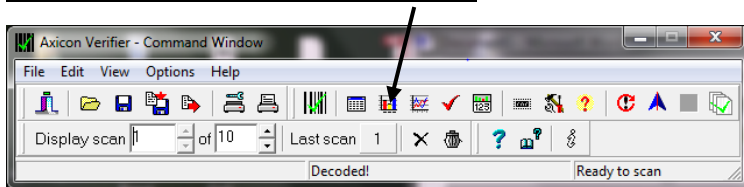
This Summary Screen shows the overall print quality of the barcode as measured by the ISO/ANSI standards (the overall grade can be expressed either as a number (ISO) - or as a letter (ANSI) - this can be altered as required through the "Set-Up" icon (see below)

Information is also given on the bar-gain (ink spread or "bleed"), the overall magnification of the barcode, validation of the check digit, structure, and light margins (Quiet zones).

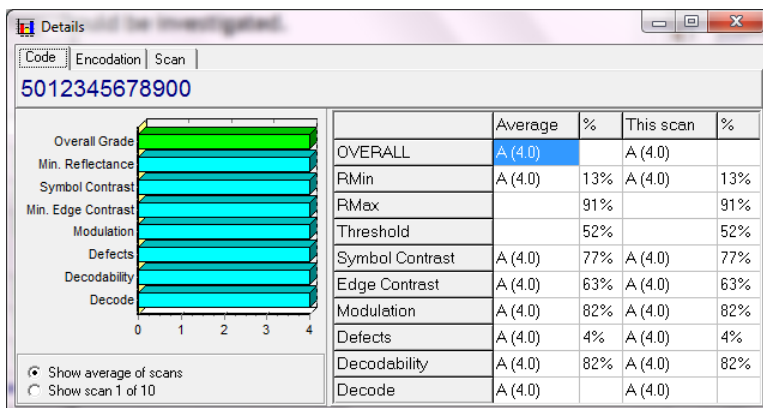
Ideally these will all show in green (pass) - any that have an amber or red warning light beside them should be investigated.

NOTE: Be aware that just because a barcode receives a "pass" grade for print quality does not necessarily mean that it is "fit for purpose" - after all the wrong barcode number on a product may be printed perfectly but that would not make it acceptable - Things like the size of the barcode (magnification) and the location of the barcode are important if the barcode is going to be "fit for purpose".

The Details Screen.... Press



to get:-



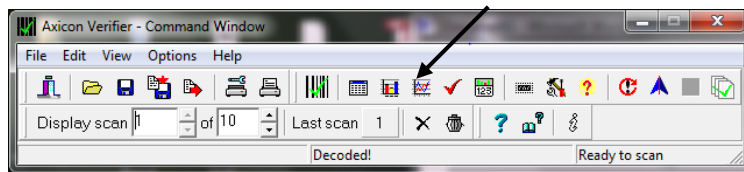
This screen shows each of the ISO/ANSI parameters that are measured and individually graded (as both grades and percentages).

Seven parameters are graded and the lowest single grade becomes the overall grade for that scan. (Ideally you should take a number of scans at different points in the height of the same barcode - the verifier will

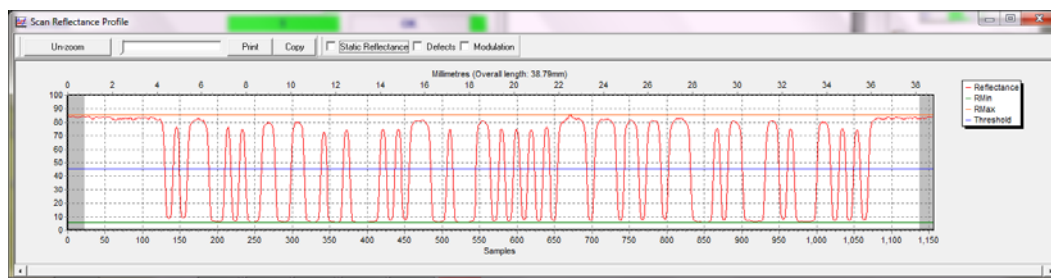
automatically average these for you to produce an overall print quality grade)

If the "Summary" Screen has shown poor print quality then the "Details" screen is the ideal point to initially see what went wrong with the barcode and hence focus the user on appropriate corrective action.

The Scan Profile Screen.... Press



to get:-



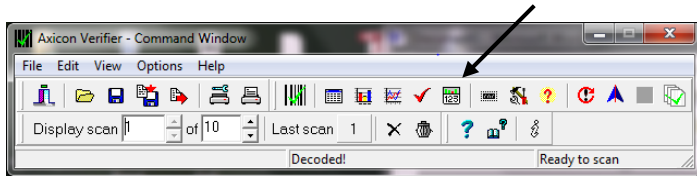
The Scan profile screen shows the user exactly what the barcode will look like to a scanner.

At the top of the graph are the higher levels of reflectance from the background and at the bottom of the graph are the lower levels of reflectance from the darker bars.

Ideally the "sweep" (contrast) from top to bottom should be as great as possible with smooth curves between the two, the "peaks" should ideally be all around the same level and the "troughs" also at the same level.

If the cause of barcode problems is poor "modulation" or a high level of defects then these can be shown overlaid on the graph by clicking the appropriate box at the top of the Scan Profile Screen.

The Dimensional Measurements Screen... Press



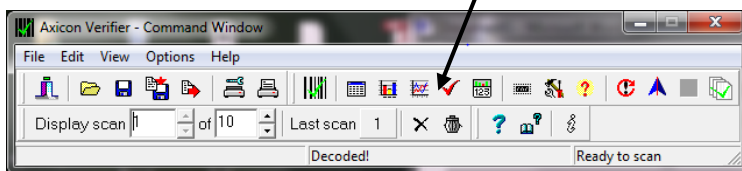
to get:-



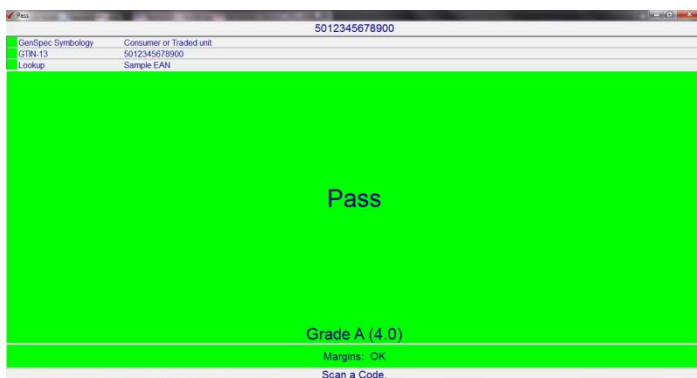
If your "Details" screen has shown a poor "Decodability" grade then this is normally because of bad dimensional accuracy - this screen will show the accuracy of the

bar/space dimensions and highlight any problem areas.

The Pass/Fail Screen... Press



to get:-

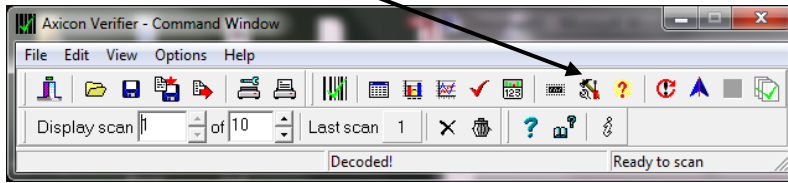


This screen is ideal for users who need a quick visual indication of whether the barcode meets the right print quality standards.

FIXING THE SCREENS:- Most of the screens described above can be moved, expanded or shrunk as required. When you have decided which screens you want displayed on your PC just use the "View" pull-down menu and click on "Save positions". Then whenever the software is started it will always have those screens in those positions.

CONFIGURING THE VERIFIER

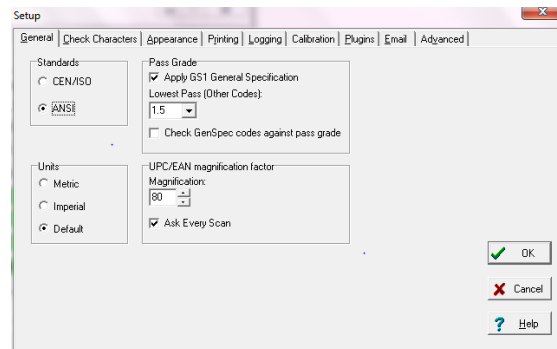
All of the primary configuration of the verifier is done through the “Set-up” icon



Press this to enter the “Set-Up” dialogue.

There are a range of tabs to cover the different groups of parameters.

Here is shown the “General” group



Standards: Click on “ISO” if you want only the numeric ISO result to be shown - or click on “ANSI” if you would prefer to be shown both results.

Units:- The “default” is to track the Windows settings for metric or imperial measurements - alternatively you can set this as required.

Pass Grade:- If you are working on barcodes within the retail supply chain then the “Apply GS1 General Specifications” should always remain ticked on. The user can select the pass/fail grade for other barcode types as specified either by an Industry Application Specification or by their customer.

Magnification factor:- This remains for continued support for Axicon customers who have the earlier model 5000 verifiers. For all others the settings in this field have no effect.

The next tab is “Check Characters”

Most barcode symbologies (types) have mandatory check digits and these will be automatically validated as to their

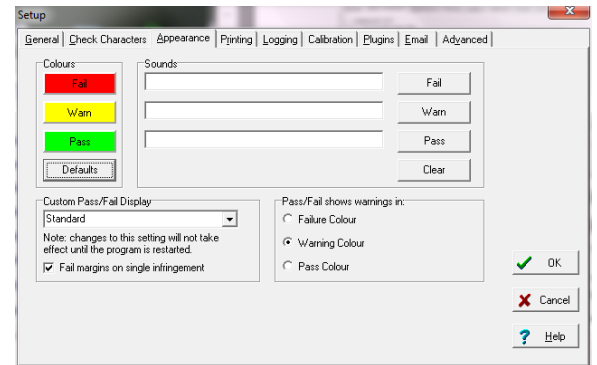


correctness. A few barcode types have no check digits at all.

This screen is to allow the user to select specifically for the barcode types that have *optional* check digits. If these are being used then the verifier can be set to validate them, if not then to ignore any checks.

The next tab is "Appearance" -

This can be used to adjust any display colours/shades for the pass, warning and fail messages - and can also be used to add Windows wave sounds to give an audible indication of quality if required.



The next tab is "Printing"

The user can pre-select any particular reports that are required - some users take the view that if the barcode passes they will just save the electronic report

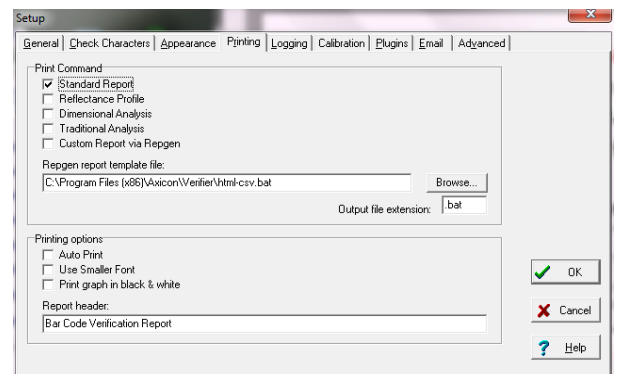
but that if the barcode fails they want all of the information possible - the required prints can be pre-selected.

This includes the option to have a personalised report generated through the built-in Report Generator, although we do recommend that if you have any particular non-standard requirements these should be discussed with Axicon.

The verifier can also be set to "Auto-print" in order to avoid a user forgetting to print a particular report.

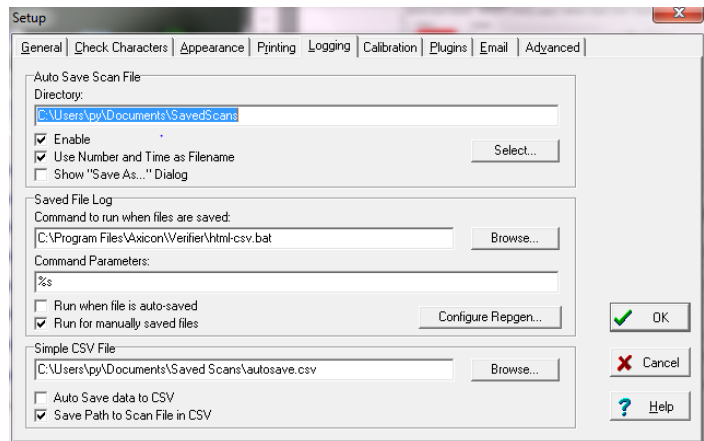
"Print graph in Black and White" - essential to tick this is you are using a monochrome (black and white) printer, otherwise a scan reflectance profile will only show the outline and not the detail.

Also, the standard printed report can be personalised if required using the "Report Header" feature.



The "Logging" tab

The "logging" tab is used to set the electronic saving of records and to run pre-configured external programs from the verifier.



We strongly advise all users to click on "Enable" to the "Auto Save Scan File" and to set a suitable location for the records to be stored.

The files saved through this process can be regarded as "audit quality" records of the verifications made and can also be used for remote diagnostics purposes.

The files can be saved automatically with a filename comprising the decoded number, date and time, sequentially numbered or by using a dialogue box.

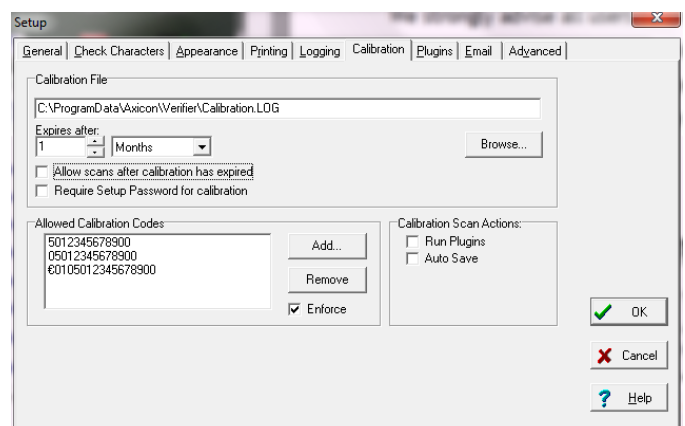
The centre part of this screen is used specifically to drive external programs automatically from the verifier.

The bottom of this screen is saving data in a format suitable for legacy purposes only.

The "Calibration" tab

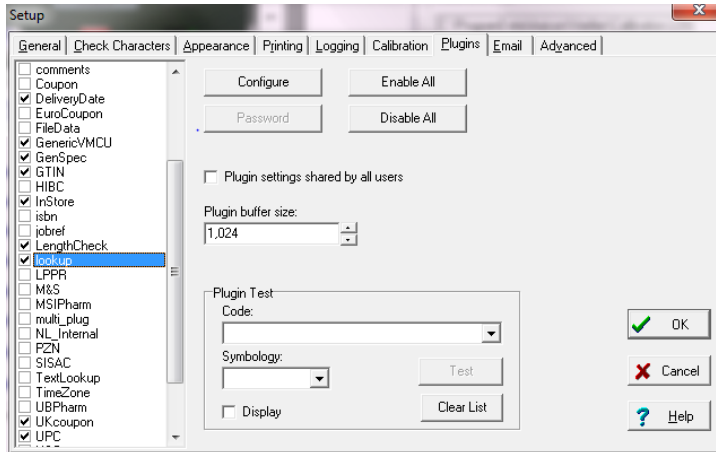
The user can define the location for the storage of the calibration records - this should be in a directory where the user has both read/write access.

The verifier will store details of each and every time that the verifier has been calibrated on that PC.



Features are included to stop users inadvertently or incorrectly using a wrong barcode for calibration purposes.

Axicon recommend that under normal circumstances user calibration is carried out on a monthly basis (more frequently where there are high dust levels or significant changes in ambient temperature.



The “Plug-ins” Tab

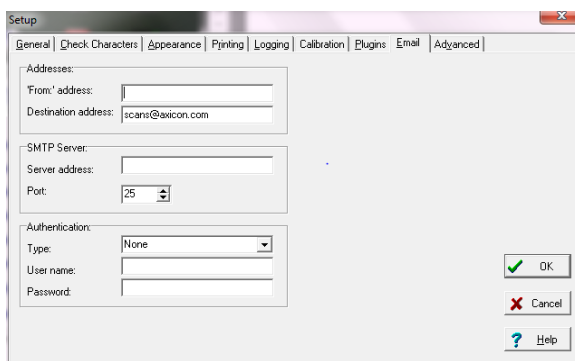
Plug-ins are an important feature of the Axicon verifier - allowing it to be tailored to industry specific or user specific features, such as running a Product lookup

database, validation of the structure of variable weight items, or identifying the formats of European pharmaceutical codes - and a whole lot more.

The Plug-ins can be installed from the CD by using the “Install Optional Plug-ins” - Please be careful to only install the plug-ins that you need otherwise some confusing results may be displayed. . If you inadvertently install Plug-ins you do not need, simply ensure the box alongside remains unticked and it will be ignored.

Please contact Axicon or your local Axicon reseller for more information about the range of available plug-ins and their applications.

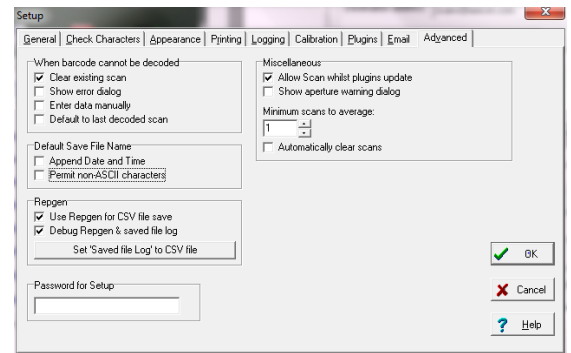
The “E-Mail” tab



To be used only if you want data to be automatically e-mailed to a third party.

The “Advanced” Tab

For most users, the key part of this screen is the ability to put password control on all of the set-up parameters to eliminate the risk of unauthorised changes to the saving or printing options.



Please do remember to keep a note of the password in a safe place.

Remember: There are many great features in the Axicon verifier - this guide has been provided just to “Get you started”. We strongly advise all users to take advantage of the Axicon Training Courses (where offered) so that they can utilise all of the beneficial features of the verifier.

AXICON SOFTWARE LICENCE AGREEMENT

This software is Copyright © 1995-2015 Axicon Auto ID Limited

Use of the Software is subject to the Axicon Software Licence terms set forth below. Using the Software indicates your acceptance of these Licence terms. If you do not accept these Licence terms within 14 days, you may return the entire unused product for a full refund.

AXICON SOFTWARE LICENCE TERMS -LICENCE GRANT

- ◆ Axicon grants you a Licence to use any number of copies of the Software, but only for Use in conjunction with the Axicon hardware product that accompanied the Software.
- ◆ "Use" means storing, loading, installing, executing or displaying the Software.
- ◆ You may not modify the Software or disable any licensing or control features of the Software.

OWNERSHIP

- ◆ The Software is owned and copyrighted by Axicon Auto ID Limited. Your Licence confers no title or ownership in the Software and is not a sale of rights in the Software.

COPIES

- ◆ You may only make copies of the Software for archival purposes or when copying is an essential step in the authorised use of the Software.
- ◆ You must reproduce all copyright notices in the original Software on all copies.
- ◆ You may not copy the Software onto a bulletin board or similar publicly accessible system.

NO DISASSEMBLY OR DECRYPTION

- ◆ You may not disassemble or decompile the software without prior written consent from Axicon.

TRANSFER

- ◆ Your Licence will automatically terminate upon any transfer of the Software. Upon transfer, you must deliver the Software, including any copies and related documentation, to the transferee.
- ◆ The transferee must accept these Licence Terms as a condition of the transfer.

TERMINATION

- ◆ Axicon may terminate your Licence upon notice of failure to comply with any of these Licence Terms.
- ◆ Upon termination, you must immediately destroy the Software, together with all copies, adaptations and merged portions in any form.

EXPORT REQUIREMENTS

- ◆ You may not export or re-export the Software in contravention of any applicable laws or regulations.

This agreement should be construed in accordance with the laws of England.

DISCLAIMER

In the following the expression "Verifier" means the verifier hardware and the associated software.

We have taken care to ensure that this Verifier is free from defects. However since we have no control over the circumstances in which you might use the Verifier you must satisfy yourself that the performance of the Verifier is suitable for your needs. Neither Axicon Auto ID Limited nor the vendor of this Verifier can accept any liability for any loss or damage (consequential or otherwise) which may be caused by use of this Verifier. If the Verifier or any part of it is defective in any way, or in some other way does not meet your expectations, the liability of Axicon Auto ID Limited is limited to the cost of the product. You should bear this limitation in mind if you use this Verifier in any situations where the acceptance or rejection of shipments of goods or your reputation may depend upon the quality of a bar code.

Under no circumstances is this Verifier licensed or authorised for use in any situation whatsoever where the health or safety of humans or animals might be put at risk

AXICON WARRANTY AND SERVICE CONTRACT

WARRANTY ON ALL PRODUCTS

- ◆ All Axicon products covered by this documentation (Axicon 6025-S, 6525-S and 7025-S series verifiers) are sold with a two year parts and labour warranty against manufacturing defects.
- ◆ This is a Return to Bench warranty with shipping costs in one direction being borne by the customer/distributor.
- ◆ Should you need to return the unit to Axicon the original transit case (plus appropriate packaging) must be used. If the equipment is returned without the original transit case, Axicon will automatically charge an additional sum for the replacement of this case.
- ◆ Axicon's standard repair turn-around is 7-10 working days from receipt of the defective unit.
- ◆ Our standard warranty does not include the provision of a loan unit. Loan units can only be supplied if you have a Service Contract (or at an extra charge).
- ◆ Axicon reserves the right to charge an inspection fee for any equipment returned under warranty for which no fault is found.
- ◆ Please contact Axicon to obtain an RMA number before returning any equipment. This number must be quoted on all documentation. Axicon cannot accept responsibility for equipment returned without a RMA number.

SERVICE CONTRACT

A Service Contract may be purchased within 30 days from the date of despatch.

The service contract period will start from the date of despatch of the unit. You may select the number of years for which you want the Service Contract to run (up to a maximum of 10 years). The appropriate payment must be made in full prior to the unit(s) being accepted as being covered by the Service Contract.

The Service Contract covers the following:

- ◆ All parts and labour to repair the unit except where damage has been caused by misuse of the equipment, in which case labour will be included but not parts.
- ◆ The availability of a swap-out unit to be used while the customer's unit is being repaired.

NOTE: Please see your Service Contract for full details including hire charges.

For current cost of a Service Contract or equipment hire please contact either Axicon or your approved Axicon reseller.

For full details on servicing options please see the "Servicing" datasheet which can be downloaded from our website www.axicon.com

FACTORY RECALIBRATION REQUIREMENT

WHY DO CCD BASED VERIFIERS REQUIRE A FACTORY RECALIBRATION?

Axicon 6000, 6500 and 7000 verifiers all use linear CCD sensors to capture scan reflectance profiles of barcodes. These CCD sensors work very much like digital cameras in the manner in which they capture an image, but they only image a single line scan across a barcode, similar to the scan line that you see with a hand held laser scanner.

The accurate measurement of reflectance across the full width of the scan relies on the barcode symbol being imaged as if the illumination were perfectly uniform and the sensor element equally sensitive at all points along the scan line. In practice this is not necessarily the case, however, the electronics within the head of these units applies a function that enables the units to perform as if this were the case, so that when the scan reflectance profile reaches the PC or Macintosh computer the application can make this assumption and proceed with analysis. To achieve this, the heads need to undergo a factory calibration process.

This calibration is not the same as the calibration that is performed by the software application on the computer. The calibration that occurs within the application assumes that a uniform profile is already achieved by the scanning head and simply shifts the overall signal so that the maximum and minimum reflectance reading with a scan taken of a known calibration, or reference test sheet gives the correct reading for that sheet. This process is the user calibration.

After many thousands of hours of use, the intensity of the LEDs that illuminate the barcode symbol will gradually change.

If this gradual dimming is not completely uniform then a factory recalibration would be required to re-establish the situation of creating uniform scan reflectance profiles from the scanning heads.

If a uniform profile is not being achieved then a barcode symbol may start to achieve lower grades, particularly for modulation, than it should be getting. However, this may not always be obvious to the user when simply trying to verify barcodes symbols.

VERIFIER SERVICING AND FACTORY RECALIBRATION

Axicon equipment is designed and manufactured to the highest specifications and complies with all relevant international standards.

Barcode verifiers are precision measuring and testing devices. It is normal practice for all inspection, measuring and test equipment to be regularly checked and recalibrated and a precision quality control instrument such as a barcode verifier is no exception.

To ensure that your equipment is working correctly, we recommend that you return your verifier annually for servicing / factory recalibration (please note that a factory recalibration is different to the user calibration procedure explained in the Quick Start Section of this booklet). Axicon Auto ID Ltd offers a high quality verifier factory recalibration service to ensure that your Axicon verification equipment provides only the best results and complies fully with GS1 standards. We recommend that this service is carried out annually on verifiers aged 12 months or older. Please contact us (or your reseller) for details of costs.

Your "Certificate of Conformance" will show the date when your verifier was last tested or recalibrated.

Should you decide not to take advantage of this service, we must remind you that Axicon Auto ID Ltd is unable to accept any responsibility for non-compliance to the appropriate GS1 STANDARDS once your verifier has exceeded the standard guarantee period provided on date of purchase.

To arrange for your verifier is to be factory calibrated.

1. Contact the Axicon Auto ID Ltd on
Telephone: +44 (0)1869 351155
Fax +44 (0) 01869 352404
Email: vcas@axicon.com
2. We will provide you with a RMA number (Return to Manufacturer Authority) for your authorisation.
3. Please fill in all details requested on the RMA form enclosed with this letter, including the RMA number.
4. Return the verifier (including all cables) in its original case, the completed RMA form, purchase order, your payment details and this documentation booklet to our VCAS Bureau at Axicon Auto ID Ltd, Church Road, Weston on the Green, Bicester, Oxfordshire OX25 3QP.

Axicon Auto ID Ltd cannot take responsibility for units returned in alternative packaging.
5. Axicon Auto ID Ltd will normally complete the service and re-calibration of your verifier within 7-10 days from the date received.

OTHER FAULTS OR DAMAGE

If, during the service /re-calibration of your equipment other faults or damage are found additional costs may be applicable. We will automatically send you details of the necessary repair and an estimate of cost.

EQUIPMENT RENTAL SCHEME

Axicon Auto ID Ltd also offers an equipment rental scheme for customers who require replacement equipment for the duration of the service. Please contact us for further details.

HOW TO CONTACT AXICON

Axicon Auto ID Ltd

Church Road, Weston on the Green, Oxfordshire OX25 3QP, UK

Tel.: +44 (0) 1869 35 11 55

Fax: +44 (0) 1869 35 1 205

Fax VCAS/Repairs: +44 (0) 1869 35 24 04

Email : info@axicon.com

Email VCAS/Repairs: vcas@axicon.com

Technical Support: support@axicon.com

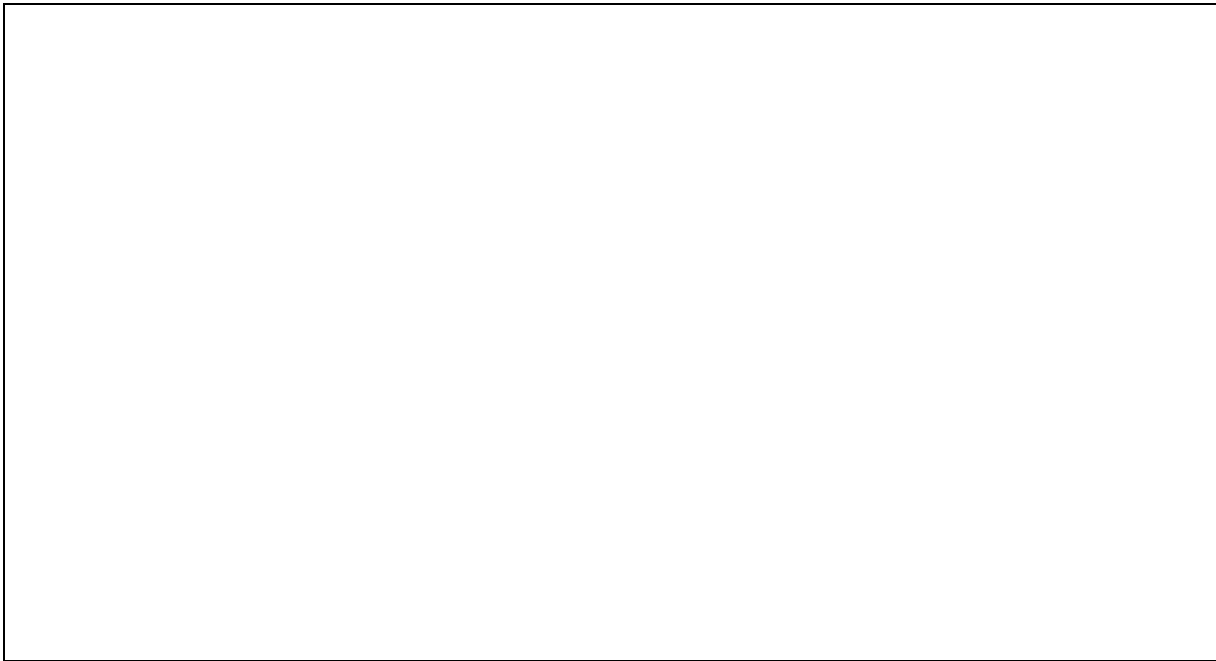
Website: www.axicon.com

For service and support in the Americas please log on to www.axicon.com for contact details

Due to Axicon's continuing product improvement programs, specifications and features herein are subject to change without notice.

All trademarks are acknowledged as belonging to their respective companies.

YOUR AXICON DISTRIBUTOR



VCAS SERVICE RECORD

Verifier Model	
Serial Number	

Date	Service Undertaken	Serial no. of calibration card	Name & Signature

