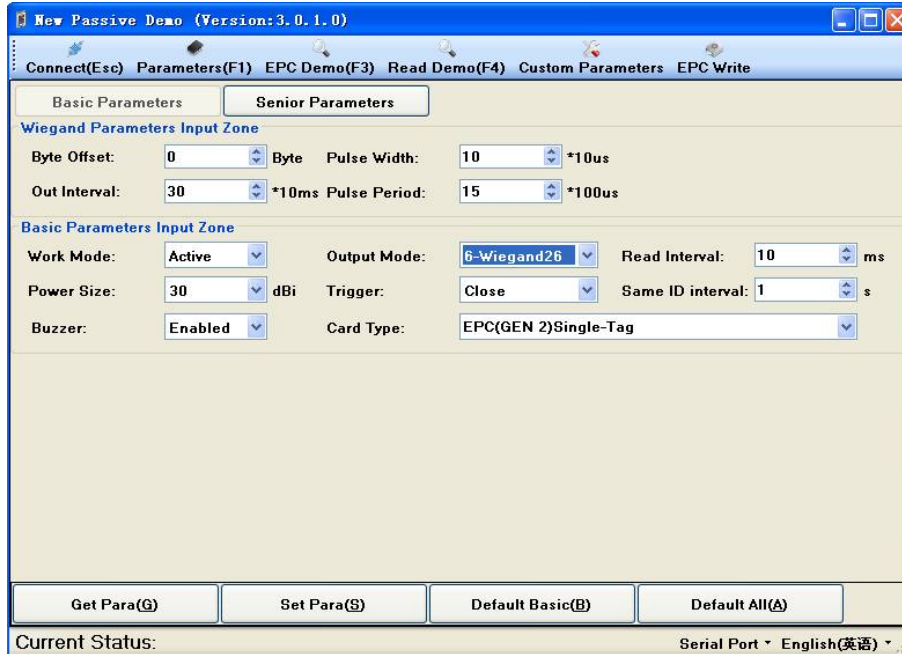


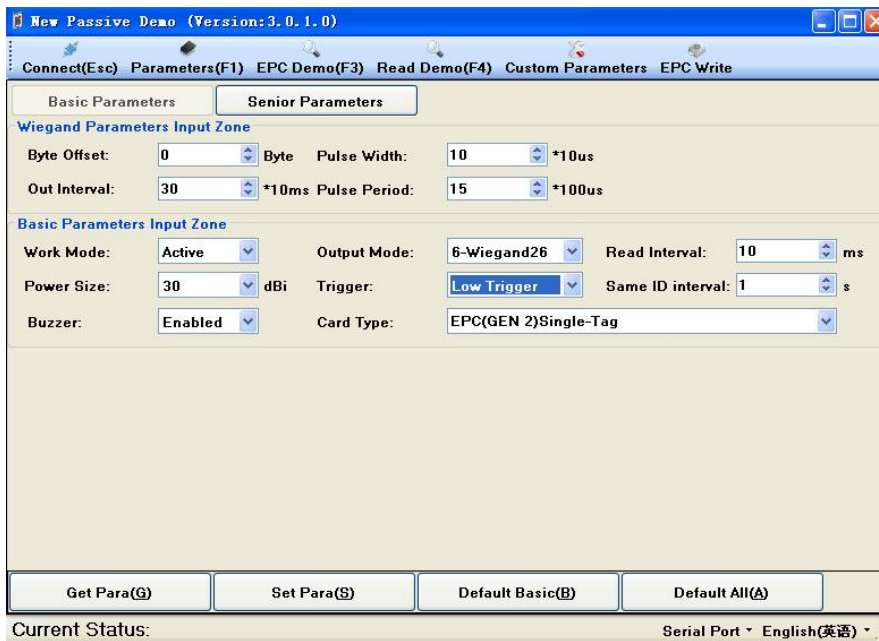
SLU UHF Reader Wiring Diagram

Wiring instructions of controller with reader

1. Wiegand wiring instructions:
 - a) Premise
 - i. Connect with Computer with RS232 (brown/yellow/blue jointconnect with DB9 of the PC),open demo,and set output mode as Wiegand26 or Wiegand34(set Wiegand26 or Wiegand34 according control board),others default;(as follows)



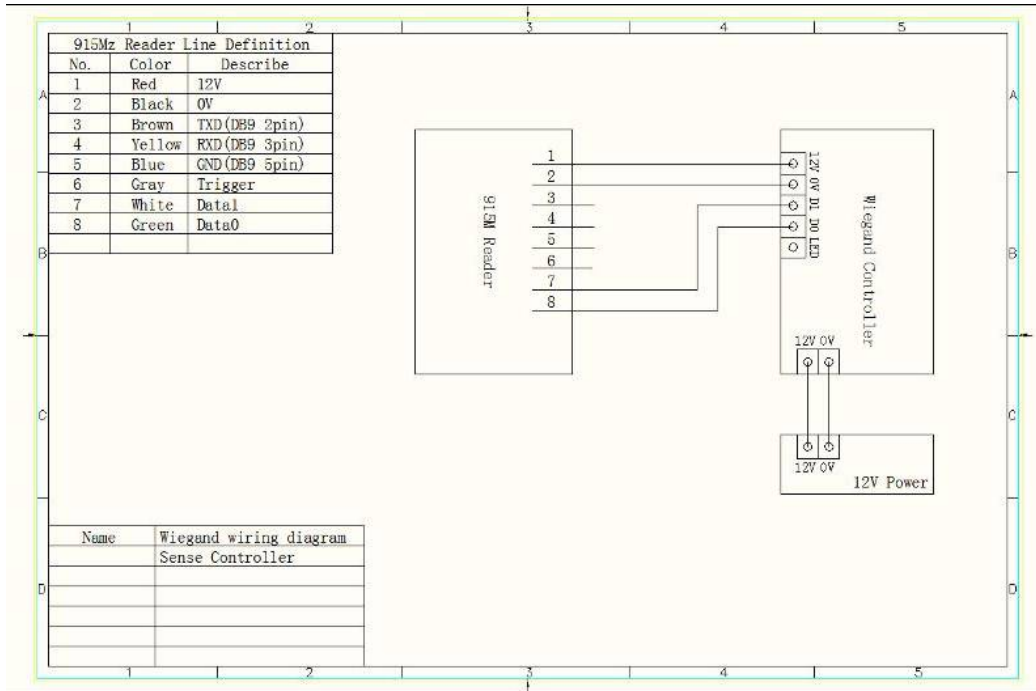
- ii. Set lower trigger when connect with Sense controller;(as follows)



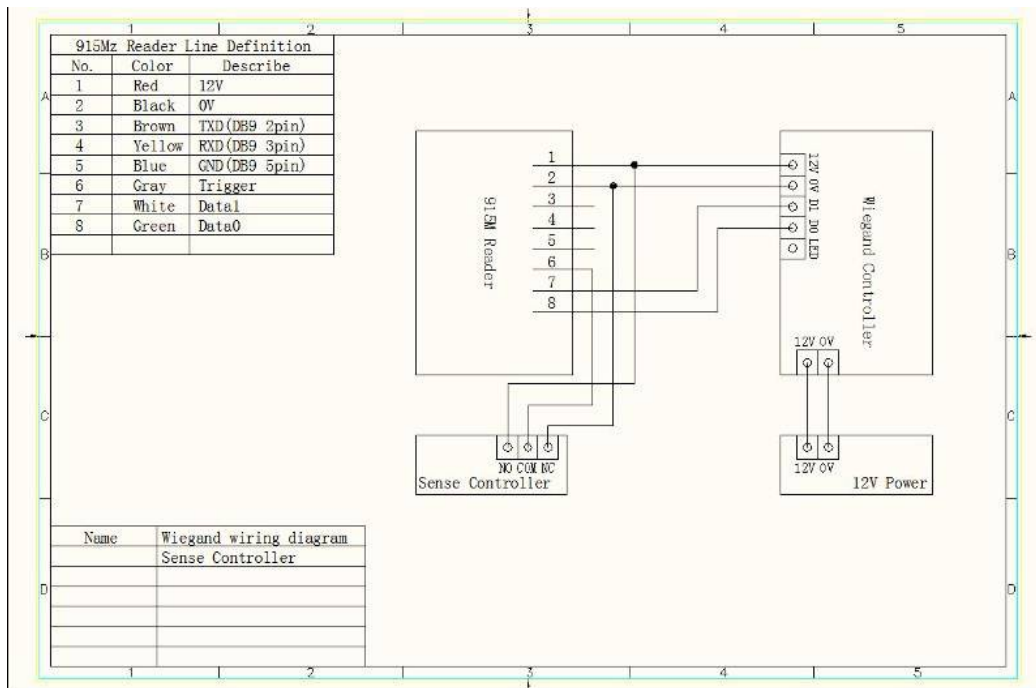
SLU UHF Reader Wiring Diagram

Note: Connect with controller by cardsender, do set power size less than 12;

b) Wiring diagram



Wiegand wiring diagram



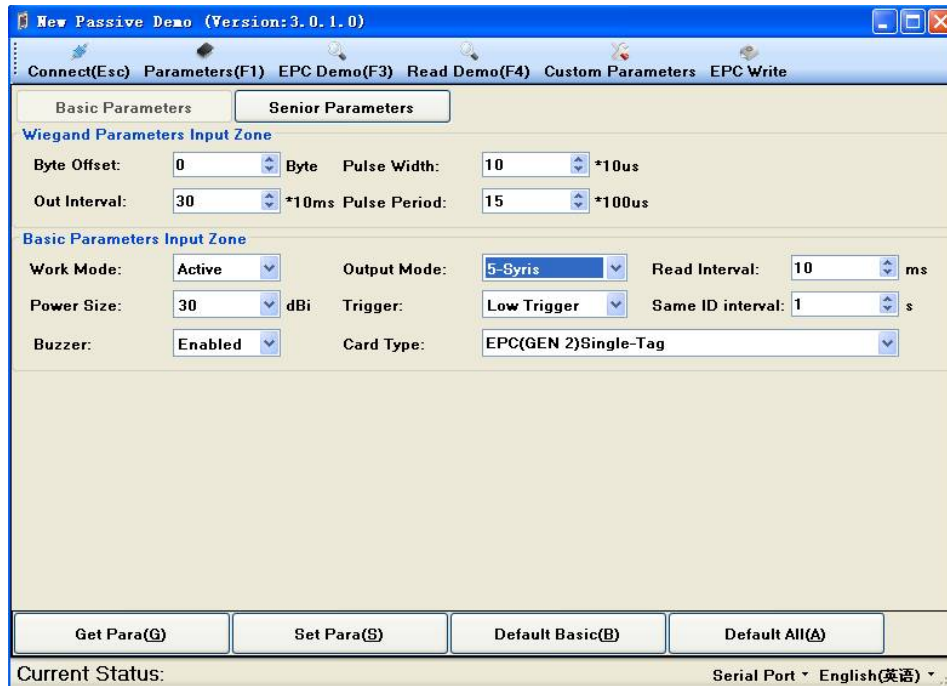
Wiegand wiring diagram(sense)

SLU UHF Reader Wiring Diagram

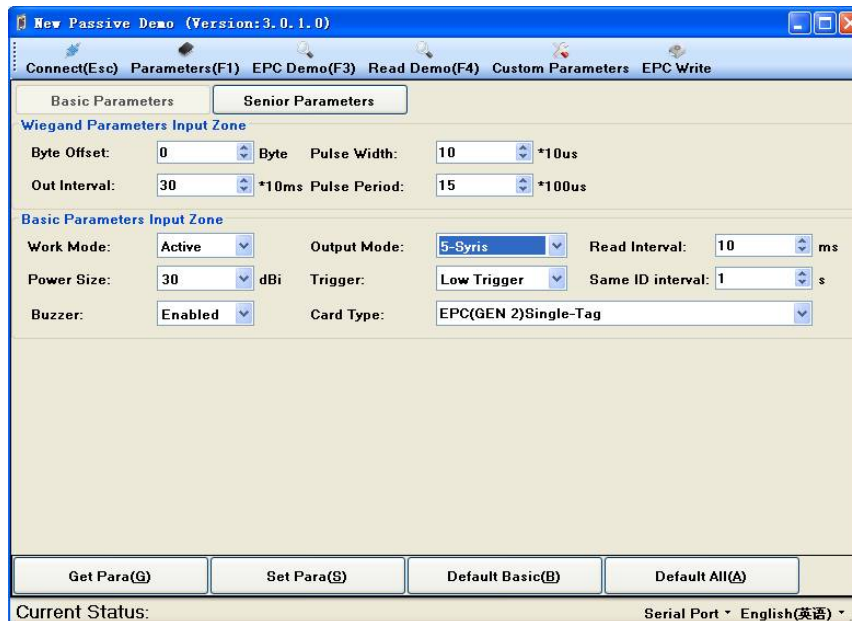
2. Syris wiring instructions:

a) Premise

- i. Connect with Computer with RS232 (brown/yellow/blue jointconnect with DB9 of the PC),open demo,and set output mode as Syris,others default;(as follows)



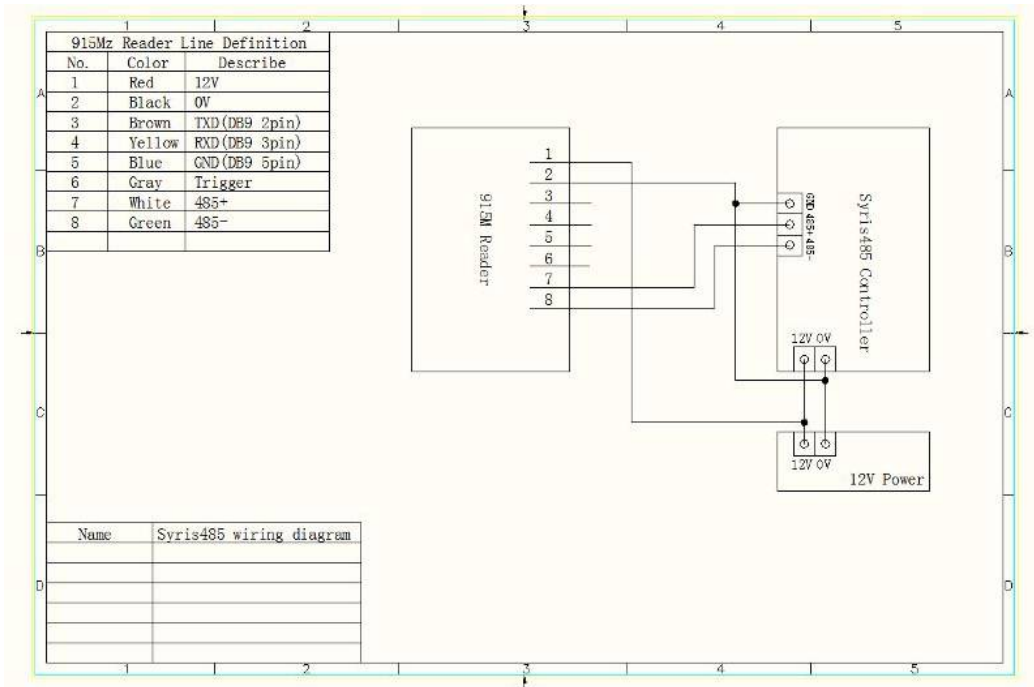
- ii. Set lower trigger when connect with Sense controller;(as follows)



SLU UHF Reader Wiring Diagram

Note: Connect with controller by cardsender, do set power size less than 12;

b) Syris wiring diafram



c) Syris 485 wiring diagram(sense)

