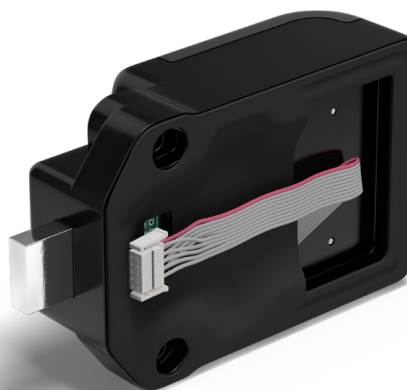
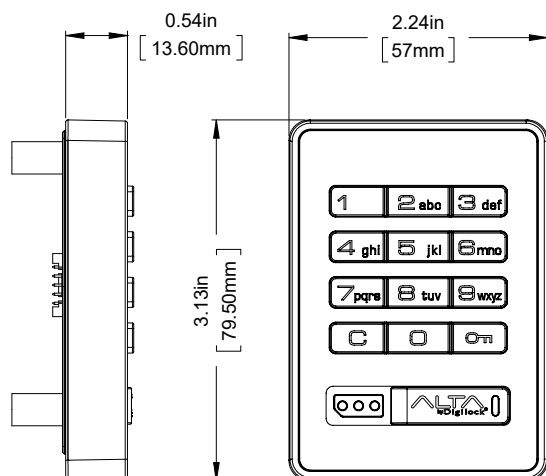


## Keypad/Deadbolt

Alta with a deadbolt locking mechanism operates in shared or assigned use functionality to secure day-use or private-use lockers.

- Keypad operation
- 1/2" (12 mm) motorized deadbolt locking mechanism
- Electronic key management
- Dual functionality - shared or assigned
- Metal housing with integrated pull handle
- Standard matte black face
- Brushed nickel finish
- Surface mount
- Designed for new or retrofit installations
- Non-handed
- Adapts to multiple door thickness
- Visual & audible indicators

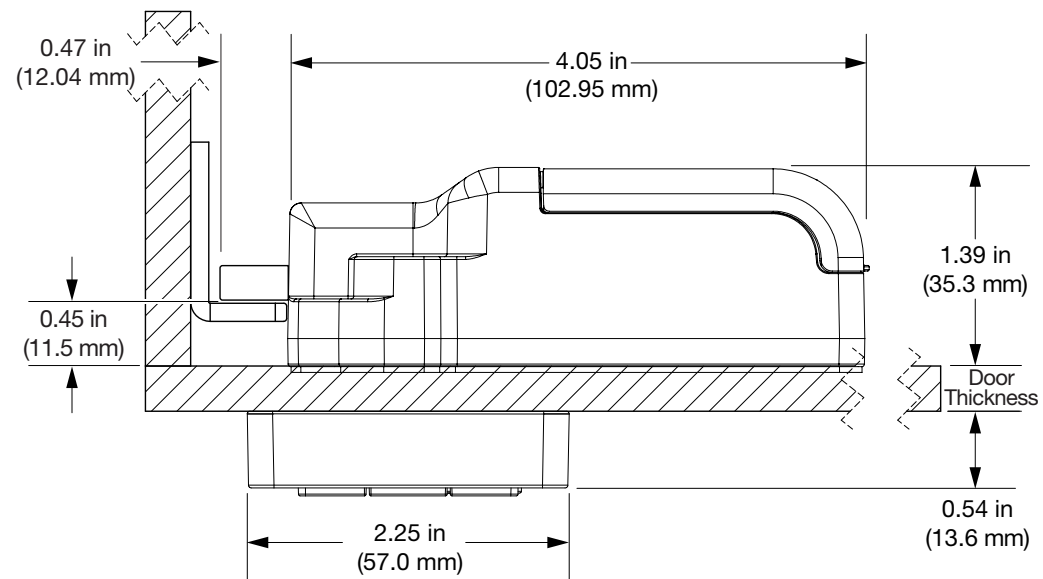
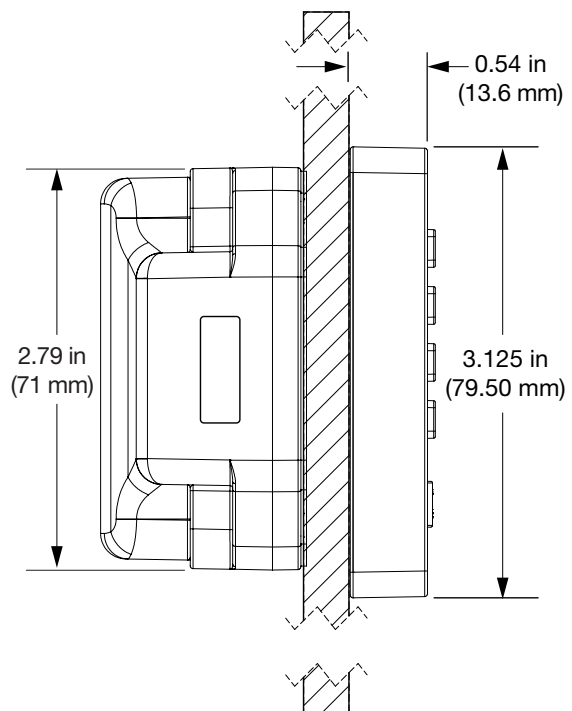


- IP55 rated for moisture and dust protection
- Patented snap-lock cable connector
- Nut post mounting
- Powered by 4 premium AA batteries
- Battery Life: 124,500 cycles with average use

ALTK-ADS2-619-010U

Features

side view

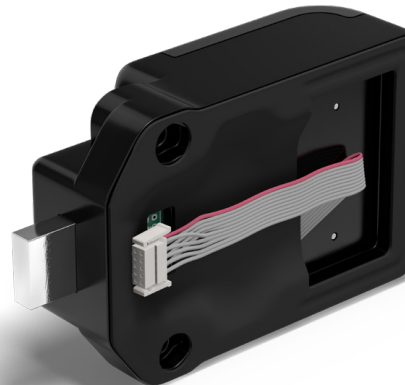
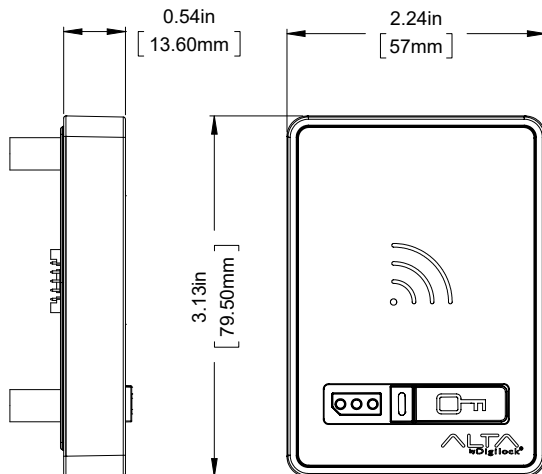


top view

## RFID/Deadbolt

Alta with a deadbolt locking mechanism operates in shared or assigned use functionality to secure day-use or private-use lockers.

- RFID operation
- 1/2" (12 mm) motorized deadbolt locking mechanism
- Electronic key management
- Dual functionality - shared or assigned
- Metal housing with integrated pull handle
- Standard matte black face
- Brushed nickel finish
- Surface mount
- Designed for new or retrofit installations
- Non-handed
- Adapts to multiple door thickness
- Visual & audible indicators
- Compatible RFID standards:
  - ISO 14443A
  - ISO 14443B
  - ISO 15693

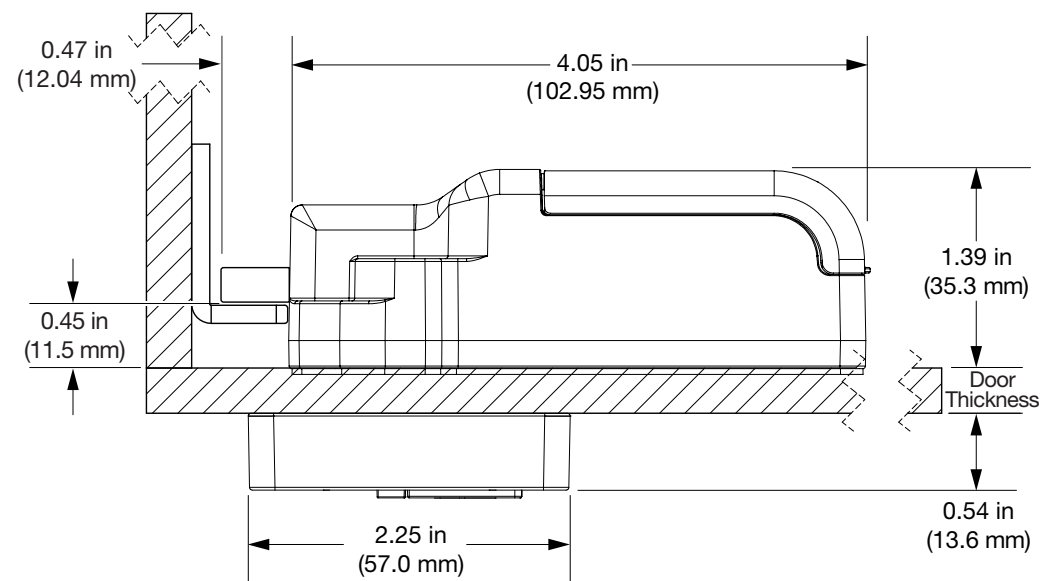
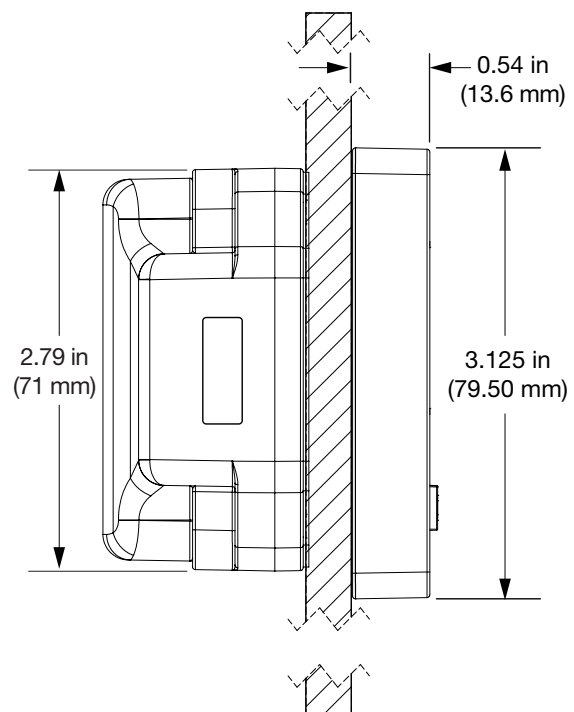


- IP55 rated for moisture and dust protection
- Patented snap-lock cable connector
- Nut post mounting
- Powered by 4 premium AA batteries
- Battery Life: 75,000 cycles with average use

ALTR-ADS2-619-010U

Features

side view

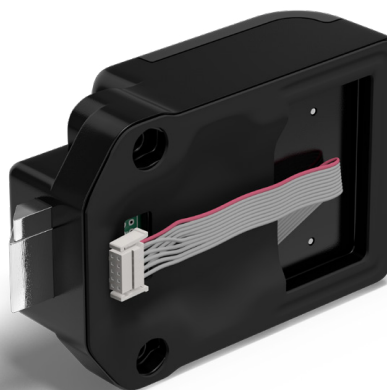
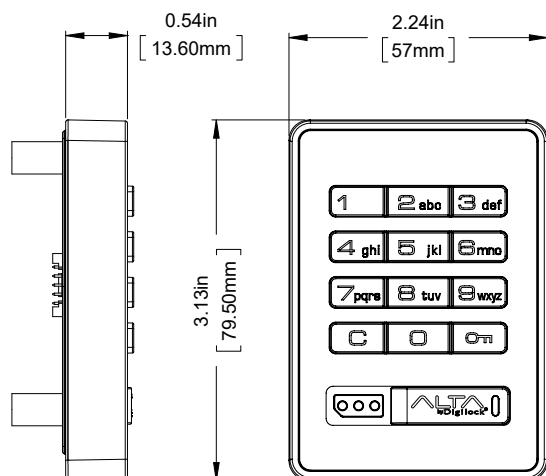


top view

## Keypad/Deadlatch

Alta with a deadlatch locking mechanism operates in assigned use functionality to secure private-use lockers.

- Keypad operation
- 1/2" (12 mm) motorized deadlatch locking mechanism
- Electronic key management
- Assigned use functionality
- Metal housing with integrated pull handle
- Standard matte black face
- Brushed nickel finish
- Surface mount
- Designed for new or retrofit installations
- Non-handed
- Adapts to multiple door thickness
- Visual & audible indicators

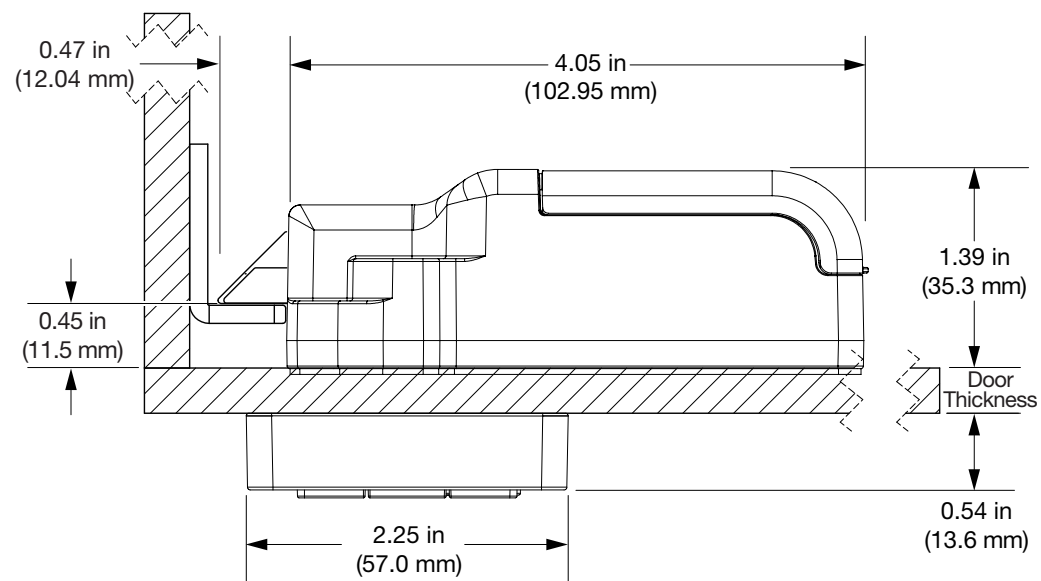
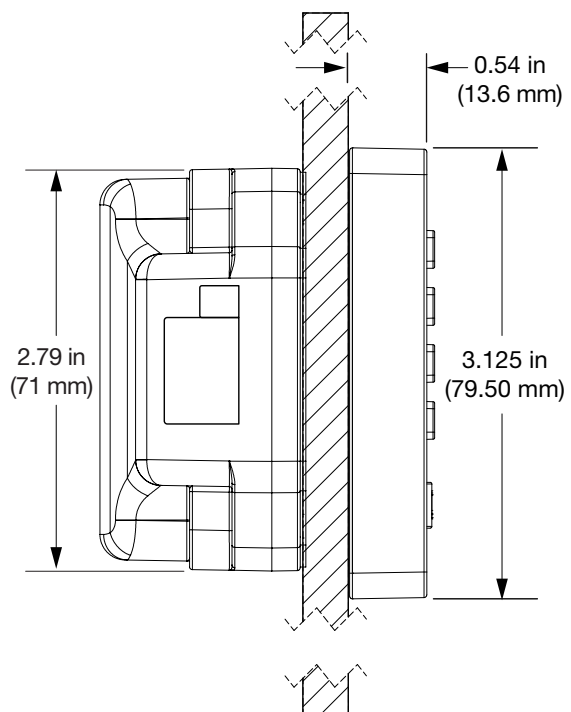


- IP55 rated for moisture and dust protection
- Patented snap-lock cable connector
- Nut post mounting
- Powered by 4 premium AA batteries
- Battery Life: 124,500 cycles with average use

ALTK-APS2-619-010U

Features

side view

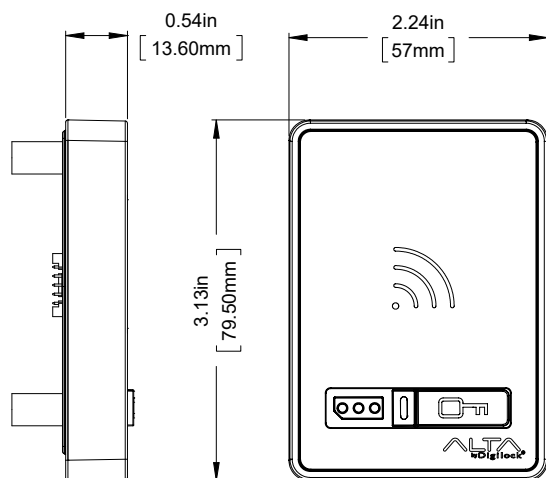


top view

## RFID/Deadlatch

Alta with a deadlatch locking mechanism operates in assigned use functionality to secure private-use lockers.

- RFID operation
- 1/2" (12 mm) motorized deadlatch locking mechanism
- Electronic key management
- Assigned use functionality
- Metal housing with integrated pull handle
- Standard matte black face
- Brushed nickel finish
- Surface mount
- Designed for new or retrofit installations
- Non-handed
- Adapts to multiple door thickness
- Visual & audible indicators
- Compatible RFID standards:
  - ISO 14443A
  - ISO 14443B
  - ISO 15693

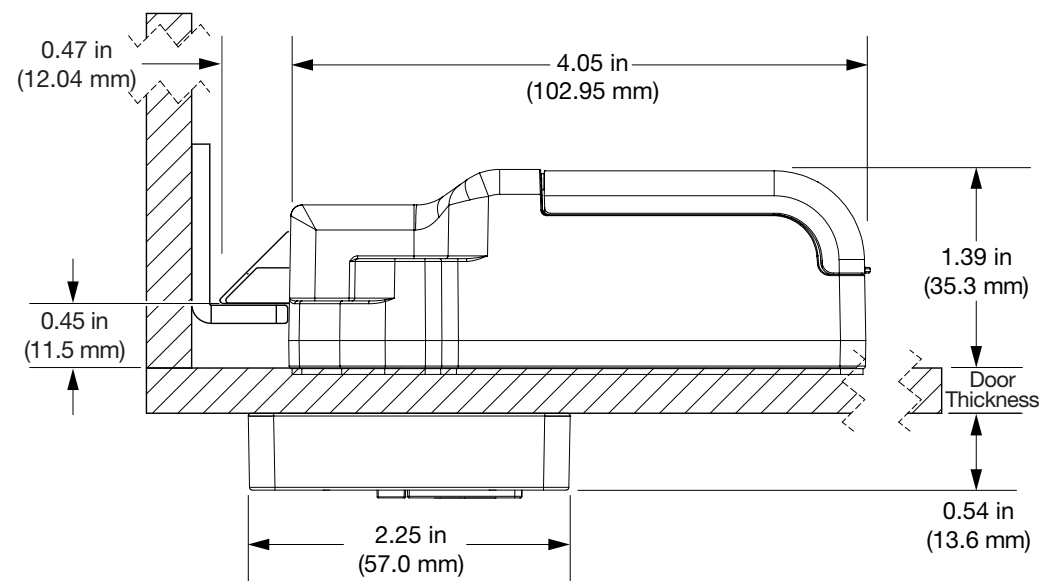
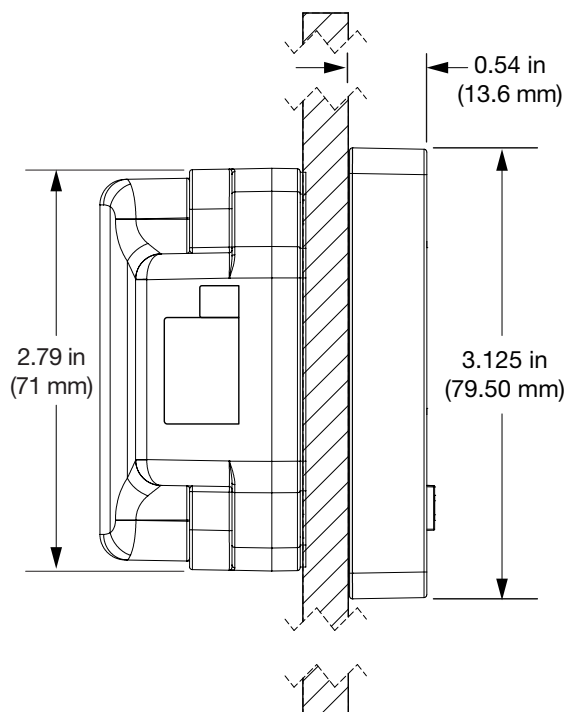


- IP55 rated for moisture and dust protection
- Patented snap-lock cable connector
- Nut post mounting
- Powered by 4 premium AA batteries
- Battery Life: 75,000 cycles with average use

ALTR-APS2-619-010U

Features

side view



top view