

## CL7205L newest ETC antenna

### FEATURES:

- ✓ **Powerful:** Max RFID performance, reading distance up to 1-20m
- ✓ **Advanced:** Excellent multi-tag reading function, >500 times each second
- ✓ **Industrial:** IP66 rugged, applying to kinds of severe environment
- ✓ **Wide using:** Easily applied to situations UHF band access control, vehicle management and other uses.

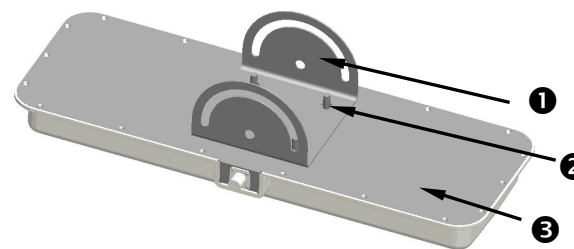
### SPECIFICATIONS:

Physical	
Size:	600mm×220mm×55.6mm
Weight:	3160g
Housing Material:	Aluminum + Engineering plastic FPR
Protection level:	IP66
Performance	
Frequency:	860-960MHz adjustable FCC.ETSI,EAC optional
Gain	12 dBi
"H" beam angle	40°
"E" beam angle	90°
Axial ratio	<3 dB
Polarization	Linear polarization

Impedance	50 ( $\Omega$ )
VSWR	$\leq 1.3:1$
Maximum Input Power	100W
Connector	N- Female or Customizable
IM.3rd Order(2x43dBm)	$< -150\text{dBc}$
Lightning Protection	DC to ground
Operational Environment	

Working Temperature:	-40 - +85°C
Storage Temperature:	-40 - +85°C
Atmospheric Pressure:	86kPa ~ 108kPa
Relative Humidity:	5%-95% RH no condensing

### Installation Procedure



①	支架2 Bracket 2
②	M8螺丝、弹垫圈及平垫圈 M8 screw, Spring washer and Flat washer
③	M12螺丝螺母 M12 screw nut

①	支架1 Bracket 1
②	M8螺母、弹垫圈及平垫圈 M8 nut, Spring washer and Flat washer
③	天线 antenna

图1 天线安装一(可横向竖向自由调整角度)

Figure 1 Antennas installation 1 ((Horizontal and vertical Angle can be adjusted freely)

**步骤一**：用“M8螺母及平垫片、弹簧垫片”将支架1固定在天线上，见图2。

Step 1: "Fix the bracket 1 on the antenna with "M8 nut, flat washer and spring washer", as shown in Figure 2."

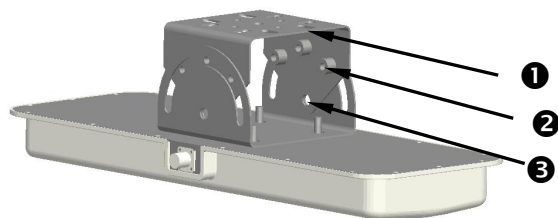
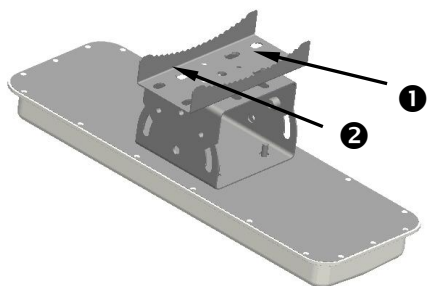


图2 天线安装二(可横向竖向自由调整角度)

Figure 2 Antennas installation 2 (Horizontal and vertical Angle can be adjusted freely)

**步骤二**：用“M8螺丝及平垫片、弹簧垫片”将支架2固定在天线上，见图4。

Step 2: Fix the bracket 2 on the antenna with "M8 screw, flat washer and spring washer", as shown in Figure 4.



①	M10螺栓、螺母、弹垫圈及平垫圈 M10 bolt, nut, flat washer and spring washer
②	狗牙 "Dog teeth"

图3 天线安装三(可横向竖向自由调整角度)

Figure 3 Antennas installation 3((Horizontal and vertical Angle can be adjusted freely)

**步骤三**：用“M10螺丝、螺母、弹垫片及平垫片”把“狗牙”固定在支架2上，见图3。

Step 3: Fix the "Dog teeth" on the Bracket 2 with "M10 screw, nut, spring washer and flat washer", as shown in Figure 3.

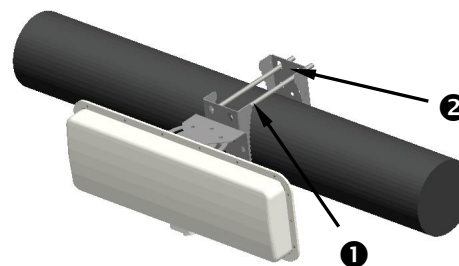


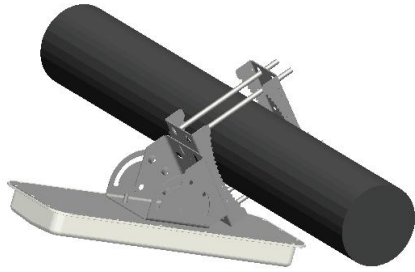
图4 天线安装四(可横向竖向自由调整角度)

Figure 6 Antennas installation 4 (Horizontal and vertical Angle can be adjusted freely)

①	狗牙 "Dog teeth"
②	M10螺丝螺母、弹垫圈及平垫圈 M10 screw, nut, spring washer and flat washer

步骤四：用“狗牙”、M10螺栓、螺母、弹垫片和平垫片及“狗牙”将天线固定在横向或竖向钢架结构或支柱上，见图6。

Step 4: Fix the antenna on the horizontal/vertical steel frame structure or pillar with "dog teeth", M10 bolt, nut, spring washer and flat washer. As shown in Figure 4.



调整支架1与支架2固定螺丝就可以调整天线摆放角度（如上图）。

Adjust the antenna installation angle by the screws between bracket 1 and bracket 2.( As the Figure above)

### Direction diagram and S-parameter diagram

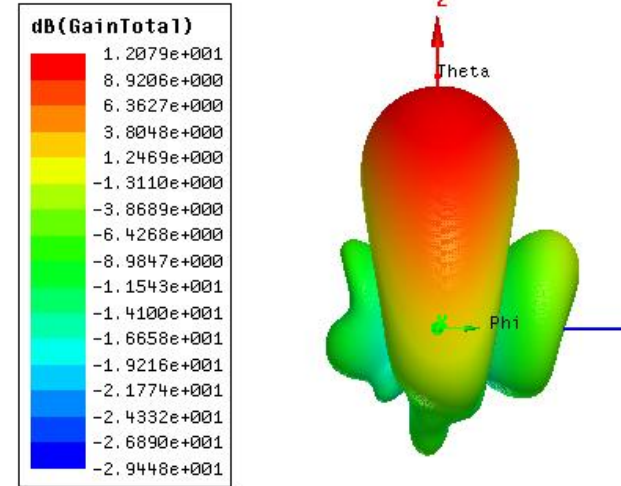


Figure 1 Antenna radiation pattern

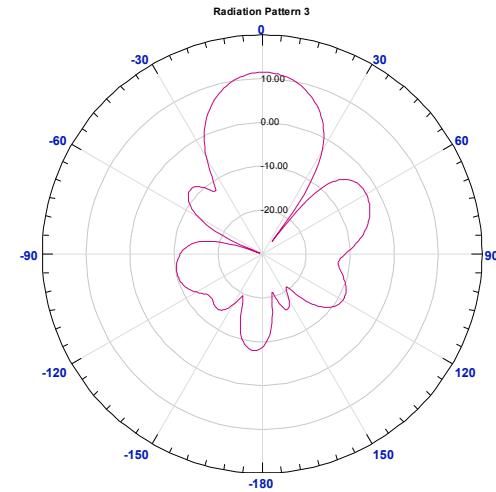


Figure 2: 2D Gain radiation diagram