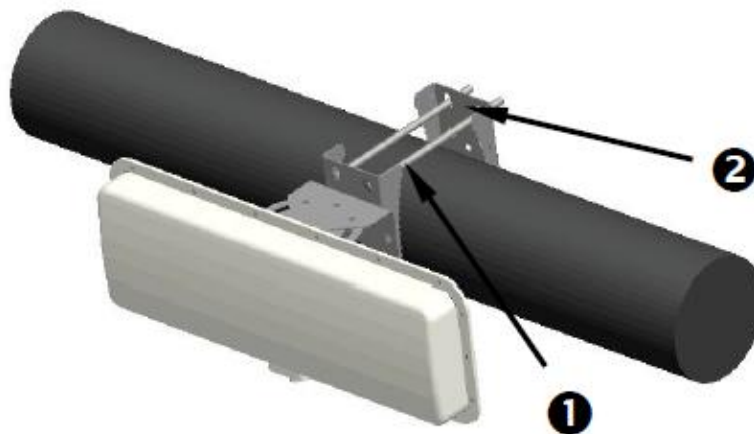




CL7205L

## Features

- Low profile with high gain, reading distance range up to 20m
- Maximum efficiency and performance across the entire frequency band
- Seamlessly compatible with different brand RFID readers
- Widely used in ITS / ETC, access control, vehicle management ,etc.



# Specifications

## Physical / Environmental Specifications

Dimensions (L x W x D)	600mm×180mm×55mm
Weight	0.6KG
Radome Material	Aluminum +ABS
Sealing	IP66
Connector type / position:	TNC female or Customizable
Mounting	Bracket
Operating Temperature	-40 - +85°C
Storage Temperature	-40 - +85°C

## Electrical Specifications

Frequency Range	840MHz ~ 960MHz
Polarization	Horizontal
Far-Field Gain	12 dBi
H side Beamwidth	50°
E side Beamwidth	70°
Typical VSWR	VSWR≤1.3
Nominal Impedance	50 (Ω)
Maximum Input Power	100W
Lightning Protection	DC to ground

# Radiation Pattern

