



**CONVERGENCE
SYSTEMS LIMITED**

THIN AND POWERFUL ANTENNA

CS776 ANTENNA

CS776 Thin antenna is a powerful monostatic antenna for use with the CS468INT, CS469, CS463 for ultra long range high sensitivity tag reading. The antenna has industrial leading circular polarization properties to enable best read of tags of all orientation as they approach the sweet zone of the antenna. The antenna has excellent beam width and front-to-end ratio.



PRODUCT FEATURES:

**Industry leading read range performance
far field antenna.**

Circular polarization.

Global Frequency coverage.

**Excellent matching for best
read performance.**

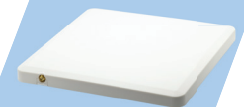
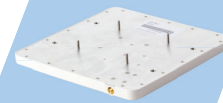
**Excellent circular polarization
characteristics for reading tags of
all orientations**



Compatible with
the CS463



Studs for mounting

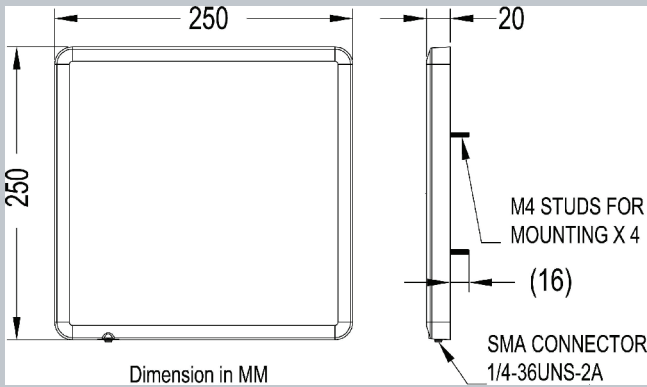


SMA Connector



CONVERGENCE SYSTEMS LIMITED

THIN AND POWERFUL ANTENNA



CS776 ANTENNA

ORDER CODE: CS776



Applications

Vehicle Mounting

Student Monitoring

Quality Control

Logistics

Asset Management

Personnel Tracking

Remote Monitoring

Waste Disposal Management

Vehicle Monitoring

Animal Tracking

Cold Chain Management

Auto Toll Gates

Contact us at info@convergence.com.hk
or visit our website at www.convergence.com.hk

Read Range	With CS463-2 & Monza R6 Dogbone, 22 meters outdoors
Frequency Range	860-960 MHz
Antenna Gain	6 dBiC
Maximum VSWR	< 1.1
Beamwidth (3 dB)	70 degrees
Front to Back Ratio	20 dB
Polarization	Circular
Maximum Input Power	10 watts
Input Impedance	50 ohms
Axial Ratio	1.2 dB
Weight	0.69 Kg (1.52 lbs)
Physical Dimension	250 x 250 x 20mm (9.84" x 9.84" x 0.79")
Antenna Connection	SMA
Connector	SMA Waterproof Connector
Radome	UV-resistant ASA
Mounting Style	100 x 100mm VESA Threaded Studs (M4 threads, M4 nuts included)
Environment	Operating Temp: -40 °C to +70°C (-40°F to 158°F) Storage Temp: -40°C to +70°C (-40°F to 158°F) Humidity: 10% to 95% Non-condensing
Lightning Protection	DC Grounded
ESD	10 KV (no ESD sensitive components inside)
Environmental Rating	IP 67